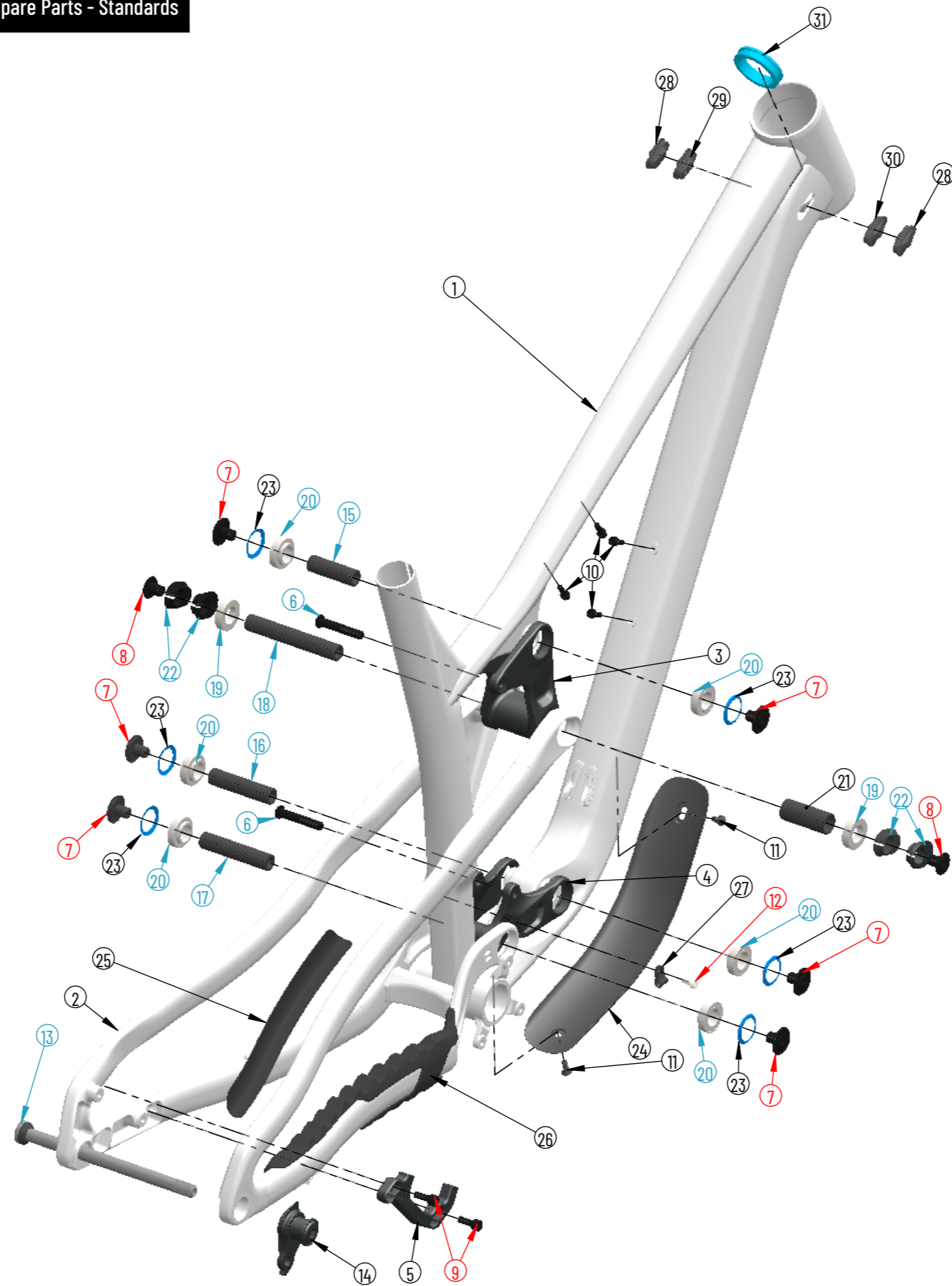
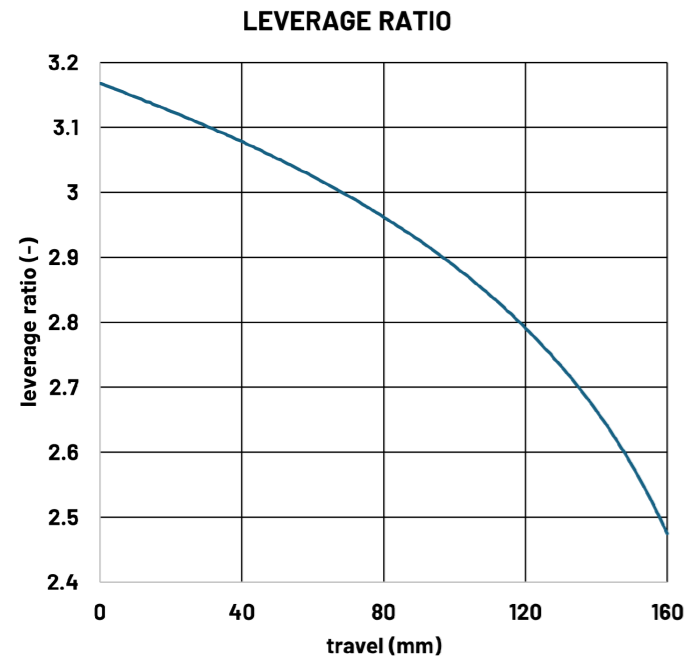


TYEE 6 AL

Exploded Drawing - Spare Parts - Standards



Standards

Max. fork length (axle to crown)	29"/Mix: 586 mm 27.5": 567 mm
Max. Fork travel	170 mm
Shock length	210 mm
Shock stroke	55 mm
Shock mount top	8x30 mm
Shock mount bottom	8x30 mm
Rear wheel travel	160 mm
Brake mount	Post mount 180 & 200 mm
Seat post diameter	31.6 mm
Seat clamp diameter	34.9 mm
Head set (S.H.I.S)	Top: ZS56 / Bottom: ZS56
Rear wheel axle	x12 (148mm-Boost)
Rear hub width	148 mm (Boost)
Chain line	52-55 mm (Boost)
Chain guide mount	ISCG 05 (Boost)
Tire size front	27.5" / MIX / 29"
Hanger	SRAM UDH / SRAM Eagle Transmission

Item No.	Part. No.	Part name	Qty.	Torque
1	001619	Front_triangle	1	
2	001682	Rear_triangle	1	
3	001689	Upper_link	1	
4	001698	Lower_link	1	
5	001690	Brake_adapter	1	
6	000991	Bolt_M8x43_custom	2	15 Nm
7	000600	15mm_Axle_Cap	6	15 Nm
8	001626	Bolt_M10x12custom	2	15 Nm
9	001764	Bolt M6x16 ISO4762	2	6 Nm
10	000733	Bolt M5x13 custom	4	3 Nm
11	000056	Bolt M5x12 ISO10642	2	3 Nm
12	001537	Bolt M5x10 DIN6912	1	2 Nm
13	001284	Propain_Sixpack_X12_axle_UDH	1	12 Nm
14	001739	UDH hanger	1	20 Nm
15	001693	Axle 15x47xM10x1	1	
16	001694	Axle 15x63xM10x1	1	
17	001696	Axle 15x70xM10x1	1	
18	001695	Axle 15x94xM10x1	1	
19	000006	Bearing_15x28x7_S61902-2RS	2	
20	000176	Bearing_15x28x7_flange_61902	6	
21	002162	Spacer 15x19x46	1	
22	001720	Flip_chip	4	
23	000602	Dust_cap_seal	6	
24	001780	DT_protector	1	
25	001879	SS_protector	1	
26	002038	CS_protector	1	
27	001713	Action cable base	1	
28	002161	Cable_grommet	2	
29	002159	Cable_grommet	1	
30	002160	Cable_grommet	1	
31	001858	Cable_shield	1	

Apply Grease

Use Loctite 243 on thread

PROPAIN