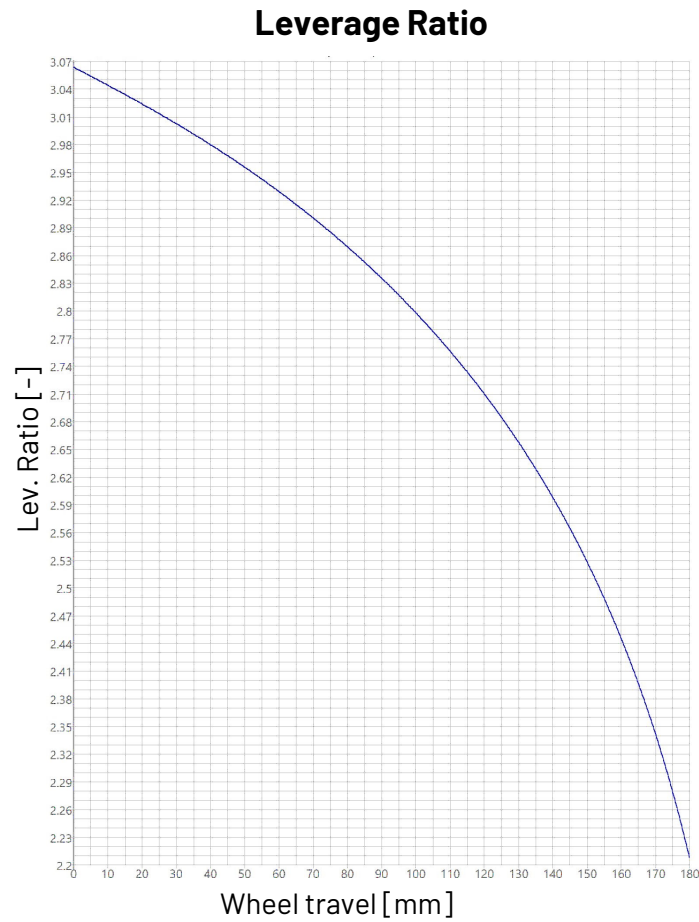


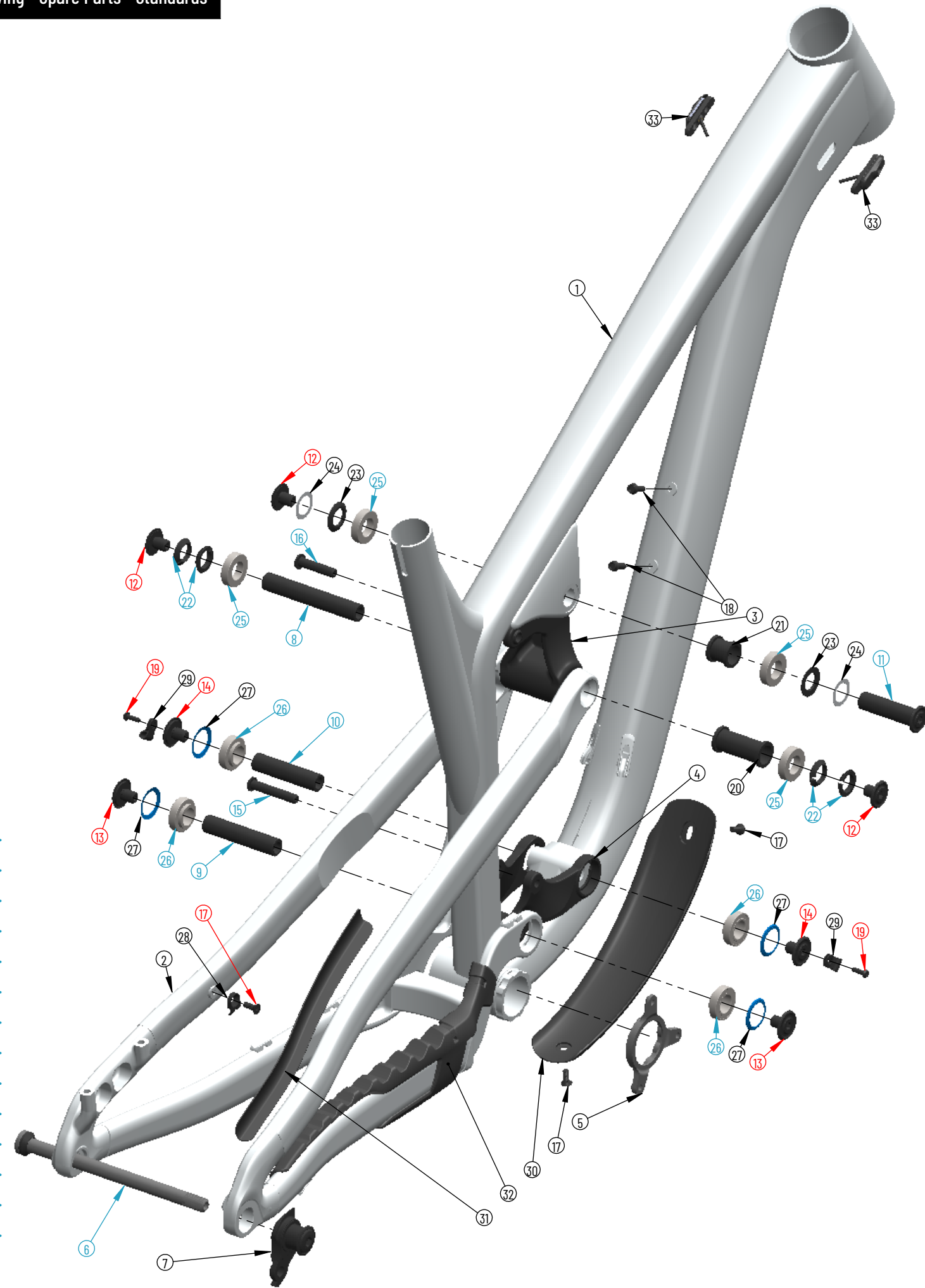
Spindrift 5 AL

Exploded Drawing - Spare Parts - Standards



Standards

Max. fork length	606 mm
Shock length	230 mm
Shock stroke	65 mm
Shock mount top	20 mm
Shock mount bottom	30 mm
Rear wheel travel	180 mm
Brake mount	Post mount 180
Seat post diameter	31.6 mm
Seat clamp diameter	34.9 mm
Head set (S.H.I.S)	Top: ZS49 / Bottom: ZS56
Rear wheel axle	X12 (148mm-Boost)
Rear hub width	148 mm (Boost)
Chain line	52 mm (Boost)
Chain guide mount	ISCG 05 (Boost)
Tire sizes	27.5" / Mix / 29"



Item No.	Part. No.	Part name	Qty.	Torque
1	001265	Front triangle Spindrift	1	
2	001176	Rear triangle Spindrift	1	
3	001288	Upper link	1	
4	001044	Lower link	1	
5	001076	ISCG_05_removable_boost148	1	
6	001284	Propain_Sixpack_X12_axle_UDH	1	12 Nm
7	001739	UDH hanger	1	20 Nm
8	001066	Axle_15x92xM10_clamp_type	1	
9	001115	Axle_15dia_69.5mm_M10x1	1	
10	000616	Axle_15dia_62mm_M10x1	1	
11	001299	15mm_Axle_Top_Pivot	1	
12	000605	15mm_clamp_Axle_Cap	3	15 Nm
13	000600	15mm_Axle_Cap	2	15 Nm
14	001714	Bolt_M10x1x12_custom	2	15 Nm
15	000991	Bolt_M8x43_custom	1	15 Nm
16	001287	Bolt_M8x33,5_custom	1	15 Nm
17	000056	Bolt_M5x12_countersunk	3	3 Nm
18	000979	Bolt_M5x15	2	3 Nm
19	001715	Bolt M4x12 ISO 7380-1	2	2,5 Nm
20	001296	barril 45.5x16	1	
21	001295	barril 20x16	1	
22	000604	Clamp_ring_15mm_axle	4	
23	001294	washer 15x2.5	2	
24	001293	spacer 15x0.25	2	
25	000006	Bearing_15x28x7_S61902-2RS	4	
26	000176	Bearing_15x28x7_flange_61902	4	
27	000602	Dust_cap_seal	4	
28	000057	Cable_guide_1	1	
29	001713	Action cable base	2	
30	001314	DT_protector	1	
31	001188	SS_protector	1	
32	002232	CS_protector	1	
33	002342	Cable_guide	2	

- Apply grease
- Use Loctite 243 on thread